

## GOORAMADDA CHILTERN RIDE (Approx 52kms)

A stimulating ride that gets close to the mighty Murray before heading through historic Chiltern and down some lovely country roads.

[Click here to view the details and terrain of the route.](#)

**LHS = Left Hand Side**

**RHS = Right Hand Side**

<b>Kms</b>	<b>Ride Description</b>
0	Rutherglen Wine Experience car park. Turn right and take a right at the roundabout and proceed along the Murray Valley Highway.
1.7	Turn left at McNamara's Country Store and proceed along Gooramadda Rd.
10	Pass Up River Road on the LHS and be watchful for traffic turning left into Gooramadda Rd.
11.4	The Old Still House B&B and Terravinia Vineyard on LHS. The self-contained B&B is perfectly suited for couples needing to 'chill out' for a while.
13.5	Mount Prior Winery on the RHS. Open 7 days.
14	The House at Mount Prior B&B. Elegant historic homestead built in the 1880s that's been converted to a five room B&B. Also caters for weddings, functions & special occasions. Dinners by appointment.
16.3	Gooramadda Olives on RHS. Taste Australia's best XV Olive Oil...the medals and awards prove it. Also table olives and tapenades. Open: Fri to Mon, 10am to 5pm
17.4	Proceed straight ahead past the Howlong turnoff on LHS. (Short detour across the Murray to Howlong approx 4kms)
18.2	Chiltern turnoff. Turn right.
21.2	Murray Valley Highway. Cross over this busy road and proceed towards Chiltern.
27.2	Chiltern Mount Pilot National Park commences on LHS.
34.1	Stop sign at Main Street Chiltern. Chiltern has been used as the backdrop for a number of movies, so authentic are its original streetscapes. Turn right along Main Street and head towards Rutherglen.
52	Rutherglen Wine Experience car park.

---

**Option A** – If you feel like an extra 10kms before heading back to Rutherglen from Chiltern, turn left at the Main Street stop sign and head out of town in the Barnawartha direction.

3.3	Turn right under the railway line bridge and then proceed through the tunnel under the Hume Freeway, known locally as Frog Hollow.
3.6	Turn right at the Chiltern Yackandandah Rd and proceed back in the Chiltern direction.
7.6	Turn right at the Beechworth Chiltern Rd intersection towards Chiltern.
9.2	Turn left into Main Street and proceed back towards Rutherglen.



TERRAVINIA




MT PRIOR WINERY



THE HOUSE AT MT PRIOR



RUTHERGLEN CYCLE ROUTES  
**GOORAMADDA  
CHILTERN LOOP**  
(APPROX 52KMS)

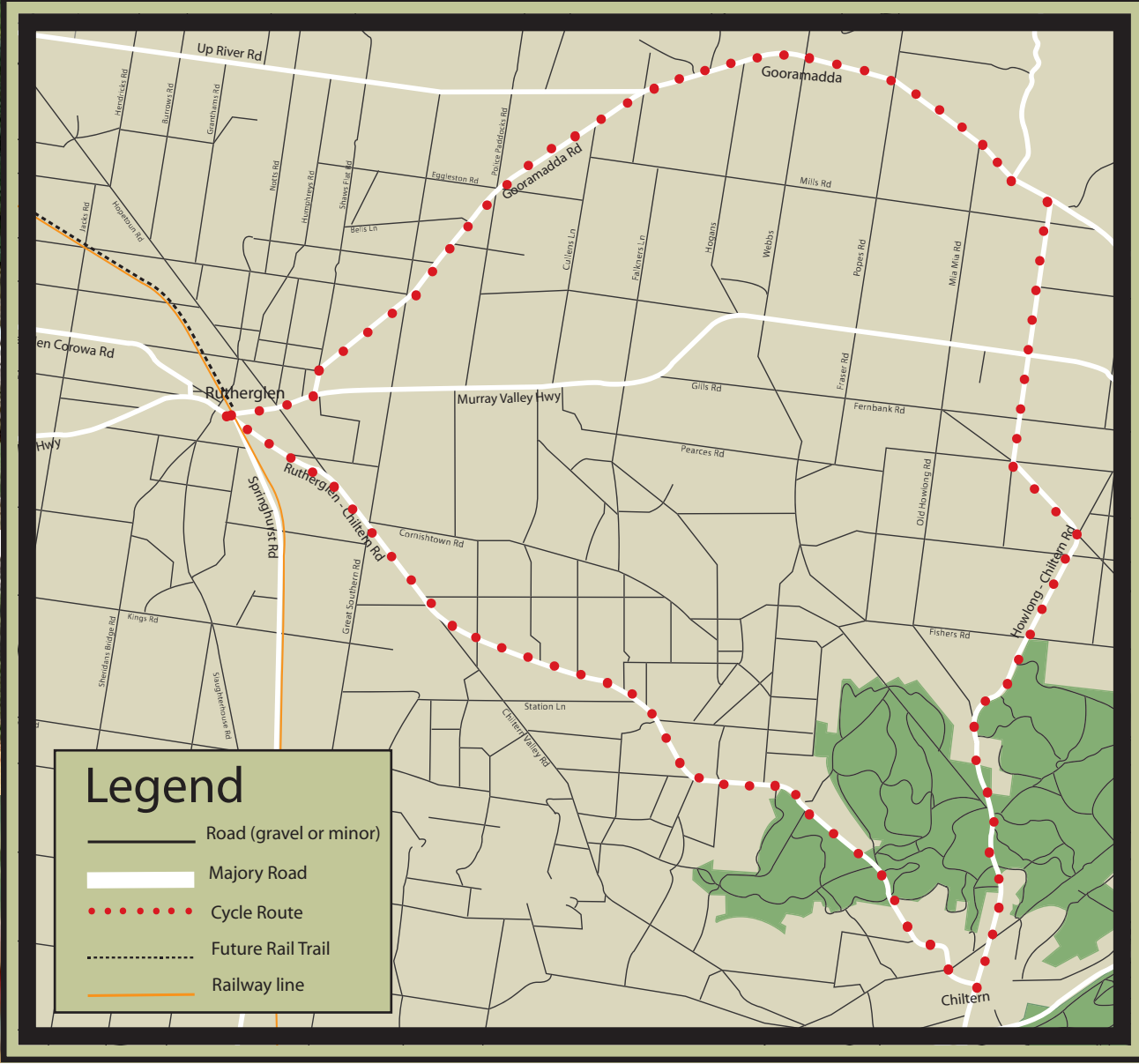



**TASTINGS & SALES**

- TABLE OLIVES
- OLIVE OIL EXTRA VIRGIN COLD PRESSED
- OLIVE PRODUCTS

**GOORAMADDA OLIVES**

SHOP OPEN 10.00am - 5.00pm  
FRIDAY, SATURDAY, SUNDAY, MONDAY  
& PUBLIC HOLIDAYS  
SHOP CLOSED CHRISTMAS DAY  
BUSES BY APPOINTMENT (02) 6026 5656



CHILTERN HISTORIC TOWN



CHILTERN MT PILOT NATIONAL PARK



**Rutherglen**  
*full of flavour*