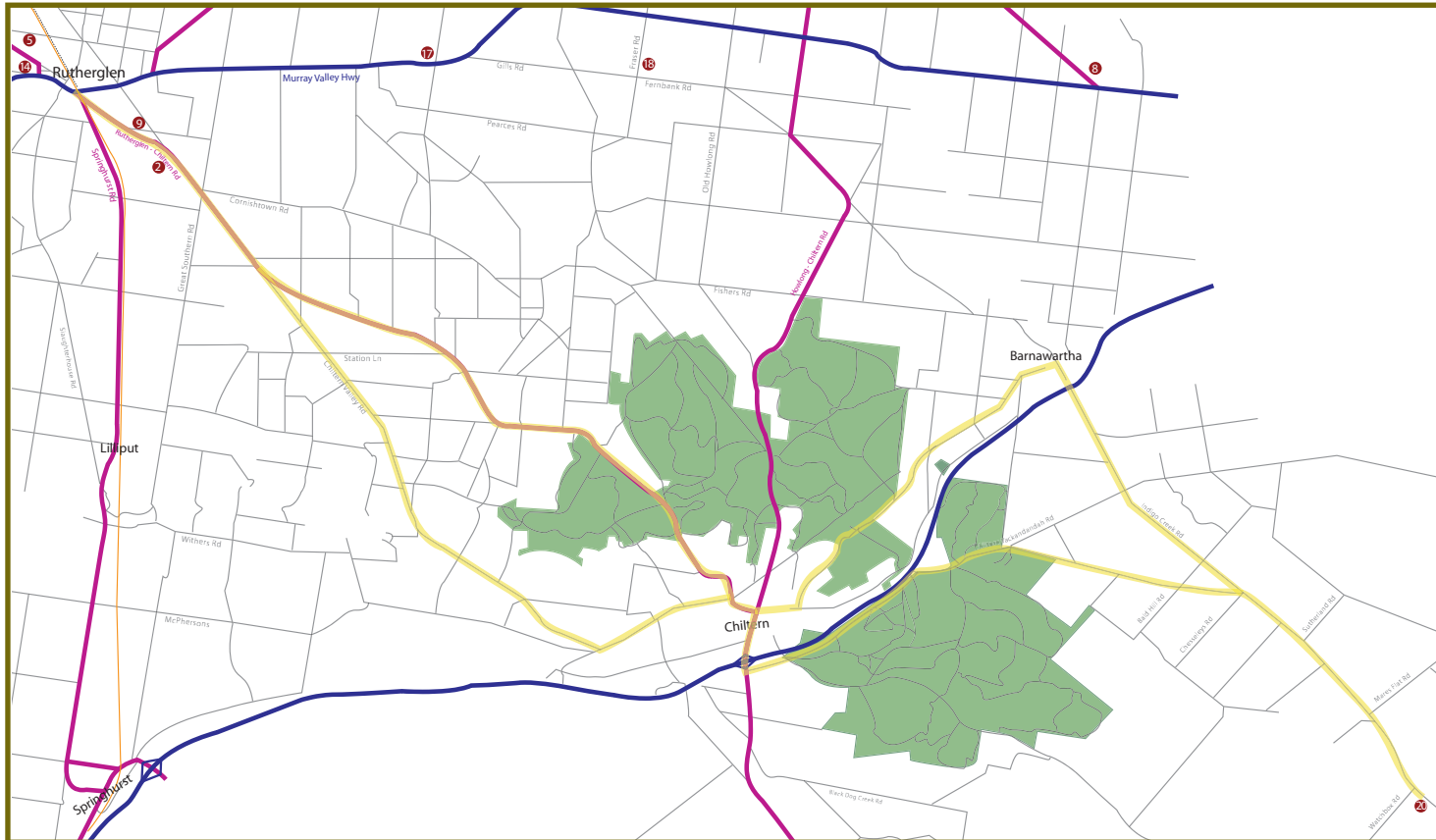
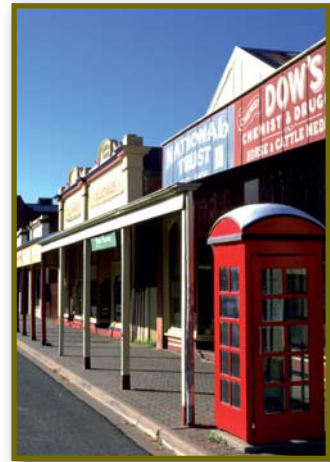


RUTHERGLEN CYCLE ROUTES

WATCHBOX LOOP

(Approx 76kms)



Legend

- Road (gravel or minor)
- Main Rd
- Freeway/Highway
- Cycle Route
- Future Rail Trail
- Railway line
- Winery (numbers correspond with Rutherglen Visitors' Guide).



WATCHBOX LOOP (Approx 76kms)

A great loop that takes in historic Chiltern, country roads through Chiltern Ironbark forests and the reward of fabulous wood-fired pizza, coffee, cakes and or course wine tasting at Watchbox Winery.

LHS = Left Hand Side

RHS = Right Hand Side

Approx Kms	Comments
0	Commence the ride from the Rutherglen Wine Experience car park. Turn left and proceed towards Chiltern.
1.7	Pass Anderson Winery (RHS), renowned for its sparkling wines.
5.2	At the Chiltern Valley turn off, verge left towards Chiltern
9.6	On this sweeping bend look to the paddocks on your left and you might spot a camel or two.
9.8	Historic Christmastown Sign (LHS) and Cyanide Mine Sign (RHS).
11.4	Notice the many mounds and mullock heaps on either side of the road. These are all from the gold diggings of the mid to late 1800s.
5.5	Chiltern Mt Pilot National Park commences on the RHS.
16.8	Enter historic Chiltern and proceed through this quaint little village.
17.9	Towards the end of the Main Street, turn right in the direction marked Beechworth and Hume Hwy. Proceed under the Hume Hwy.
19.4	Turn left at the road signposted to Yackandandah.
	Ride along this lovely country road surrounded by Chiltern Mt Pilot National Park.
	(The 21,565 ha park includes the striking Mt Pilot Rand and Woolshed Falls. It protects a Box-Ironbark forest that contains a diverse range of natural and historic landscapes.)
30	Turn right at the 'T' intersection towards Yackandandah.
35.9	Turn right at entrance to Watchbox Winery, which is the half-way point. Enjoy fabulous wood-fired pizzas, coffee, cakes plus the very flavoursome Watchbox Wines. On leaving the winery, turn left back in the direction you came.
42	Chiltern turn off on the LHS. (Take this if you wish to retrace your route back to Rutherglen.) Otherwise, continue past this turn off towards Barnawartha.
47	Proceed up and over the Hume Hwy into Barnawartha.
48.1	Turn left at the roundabout in the Chiltern direction
56.1	Enter the outskirts of Chiltern and proceed through town along Main Street.
57.3	Turn left into High Street (at the Rutherglen directional sign) and proceed along this road out of town.
60.3	Turn right at the Chiltern Valley Road and proceed along this road in the Rutherglen direction.
63	Major Mitchell Cairn
70.7	Intersection with Rutherglen Chiltern Road. Proceed in the Rutherglen direction.
76	Rutherglen Wine Experience car park.